

Load Pic and Load Any

Written by Administrator
Wednesday, 08 December 2010 05:28 -

EasyPal Load Pic and Load Any Help

Please Note that due to differences in the way Windows Operating Systems handle files and folders some operating systems may not allow correct operation of one or the other of these versions.

Users are encouraged to use whichever Version they prefer.

The EasyPal Original LOADPIC Screen (Use Windows Open Dialog option is NOT Selected)

Load Pic and Load Any

Written by Administrator

Wednesday, 08 December 2010 05:28 -

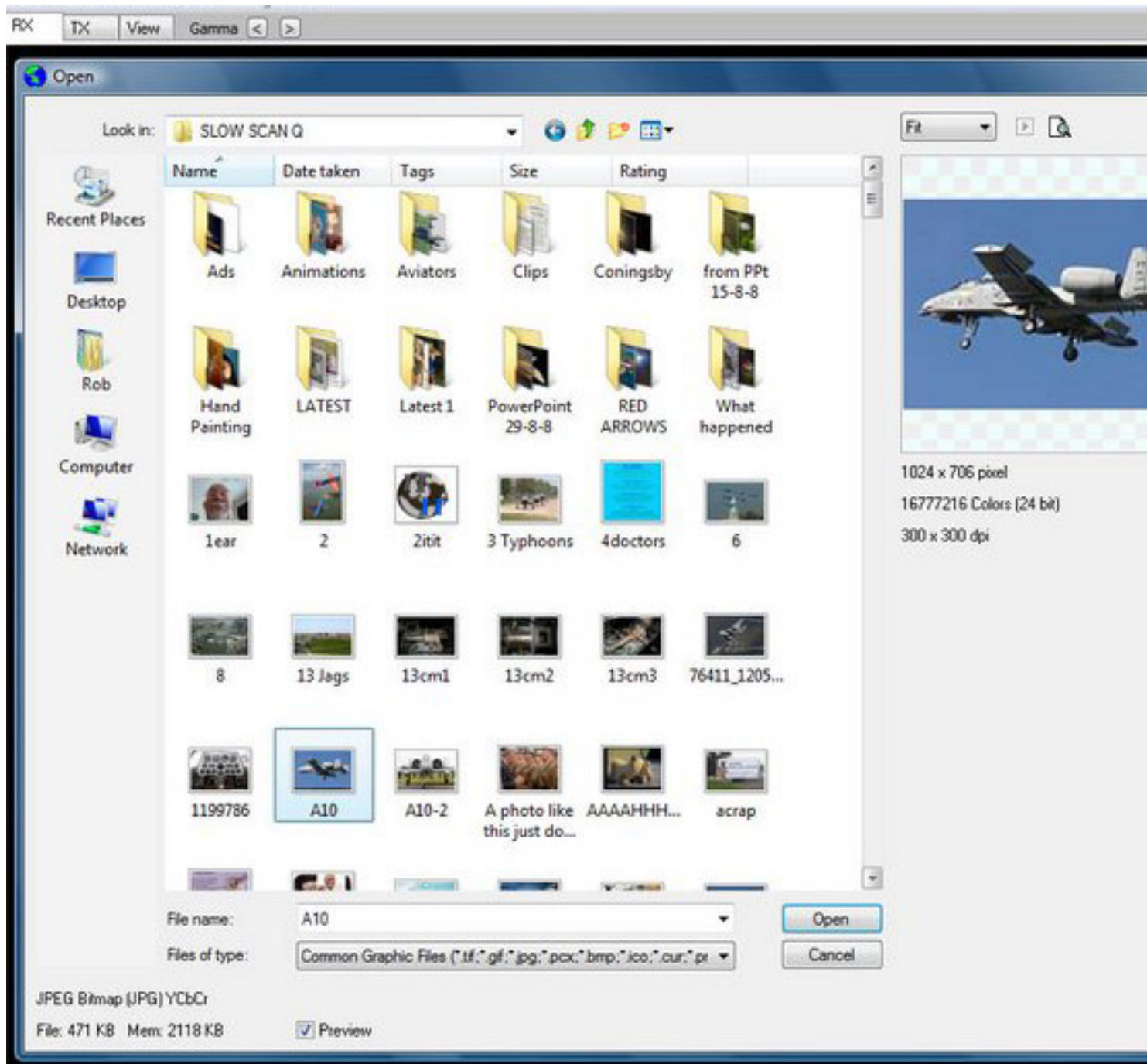


Enhanced User Options: when you click this option to Load a Picture.... they are:
1. The first image will be loaded over the speed of Thumbnails
2. The second image will be loaded over the speed of Thumbnails
3. The third image will be loaded over the speed of Thumbnails
4. The fourth image will be loaded over the speed of Thumbnails
5. The fifth image will be loaded over the speed of Thumbnails
6. The sixth image will be loaded over the speed of Thumbnails
7. The seventh image will be loaded over the speed of Thumbnails
8. The eighth image will be loaded over the speed of Thumbnails
9. The ninth image will be loaded over the speed of Thumbnails
10. The tenth image will be loaded over the speed of Thumbnails
RIGHT Click the Button to Save as a
With the following settings selected:

Load Pic and Load Any

Written by Administrator

Wednesday, 08 December 2010 05:28 -



RX
The following information is provided for informational purposes only. It is not intended to be used as a substitute for professional advice. The information is provided as is, without warranty of any kind, express or implied, including but not limited to the accuracy, completeness, and reliability of the information. The information is provided for informational purposes only and should not be used for any other purpose.